



Potential Capital Project

2019

Facilities Committee

- Charge
 - **Examine capital improvement needs in order to determine if a capital project is necessary and what the scope of the project should be.**
- Membership
 - Community/school members / BOE member
 - Supt. of Schools / Business Administrator / Facilities Director

Capital Project Facts

- Must be **voted on by the community.**
- School district borrows funds via a bond issue and pays back the funds over 15 years.
- NYS provides aid to building projects; but not all items are aided.
- The tax levy is increased to pay for the portion of the project not covered by state aid (we can avoid a major impact by matching debt that retires)
- Architects / engineers and a construction mgt. firm work with the district.

Debt Expiration – Timing

- Board Vote
 - At least four months prior to community vote, environmental review process begins
- Community Vote Options – Begin Work in Spring/Summer of 2021
 - December 2019
 - May 2020
- Variables:
 - Initial borrowing for the project would be in the 2021-2022 school year
 - One large debt service payment drops off in 2022-23
 - **The debt for a new project could replace the debt that is expiring in 2022-23; having NO ADDITIONAL tax payer cost.**

Cost

- \$24 million project would match the local share of the debt that drops off in 2022-23.
- **A separate handout shows debt detail**
- Our building aid ratio is currently almost 70% - meaning approx. 2 out of every 3 dollars spend will come from NYS
- We anticipate that at least 90% of the work in the Building Condition Survey would be aidable.

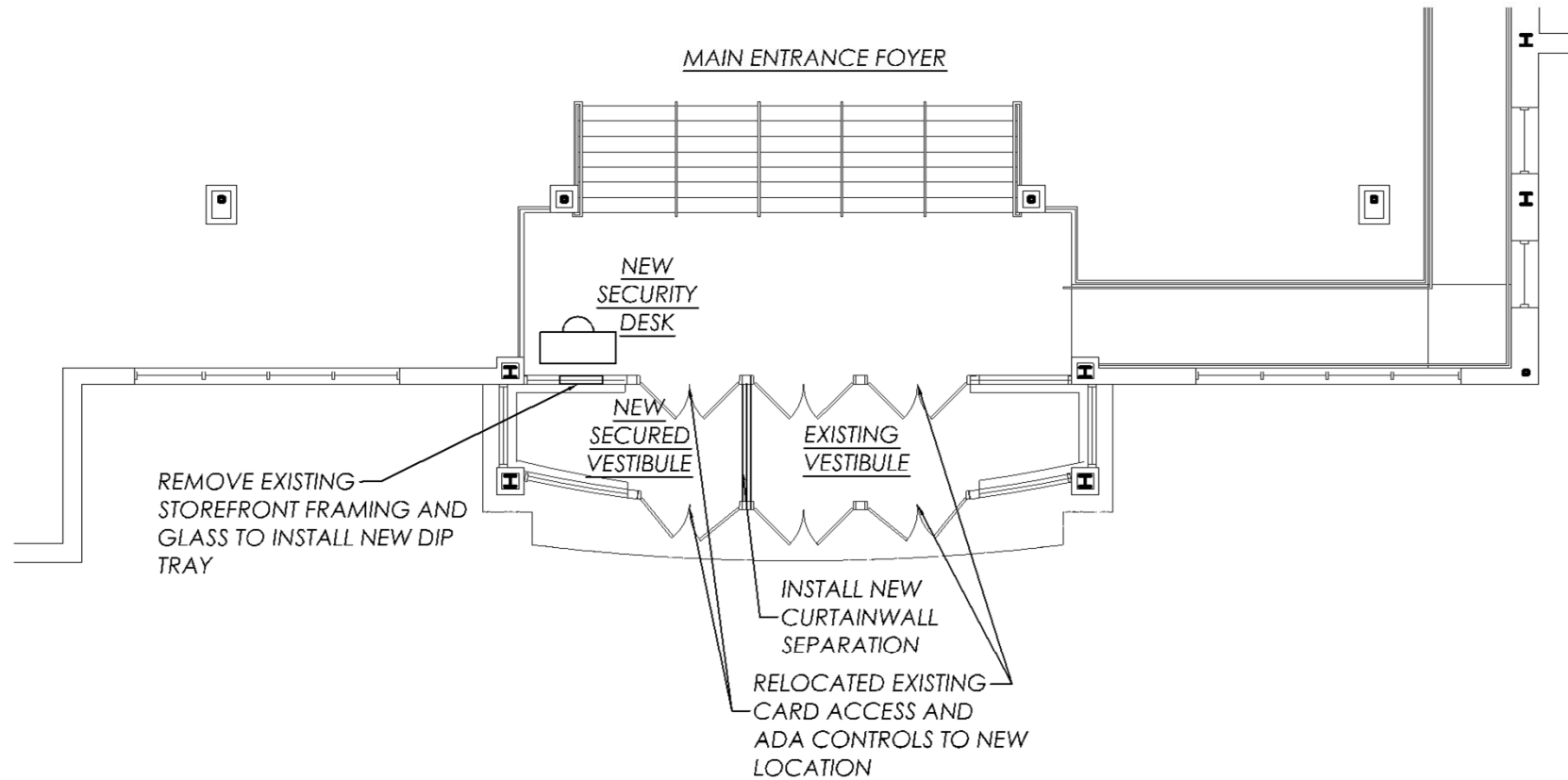
Building Conditions Survey

- Every five years, school districts must hire an architectural firm to conduct a building conditions survey.
- The survey identifies health and safety issues, interior construction & exterior construction issues.
- If a building is “touched” in a project, all code items must be updated.
- BCS plus items that have been newly identified is over \$40MM
- **A separate handout shows all items from the survey**

Bldg. Front Entrance Security Enhancement

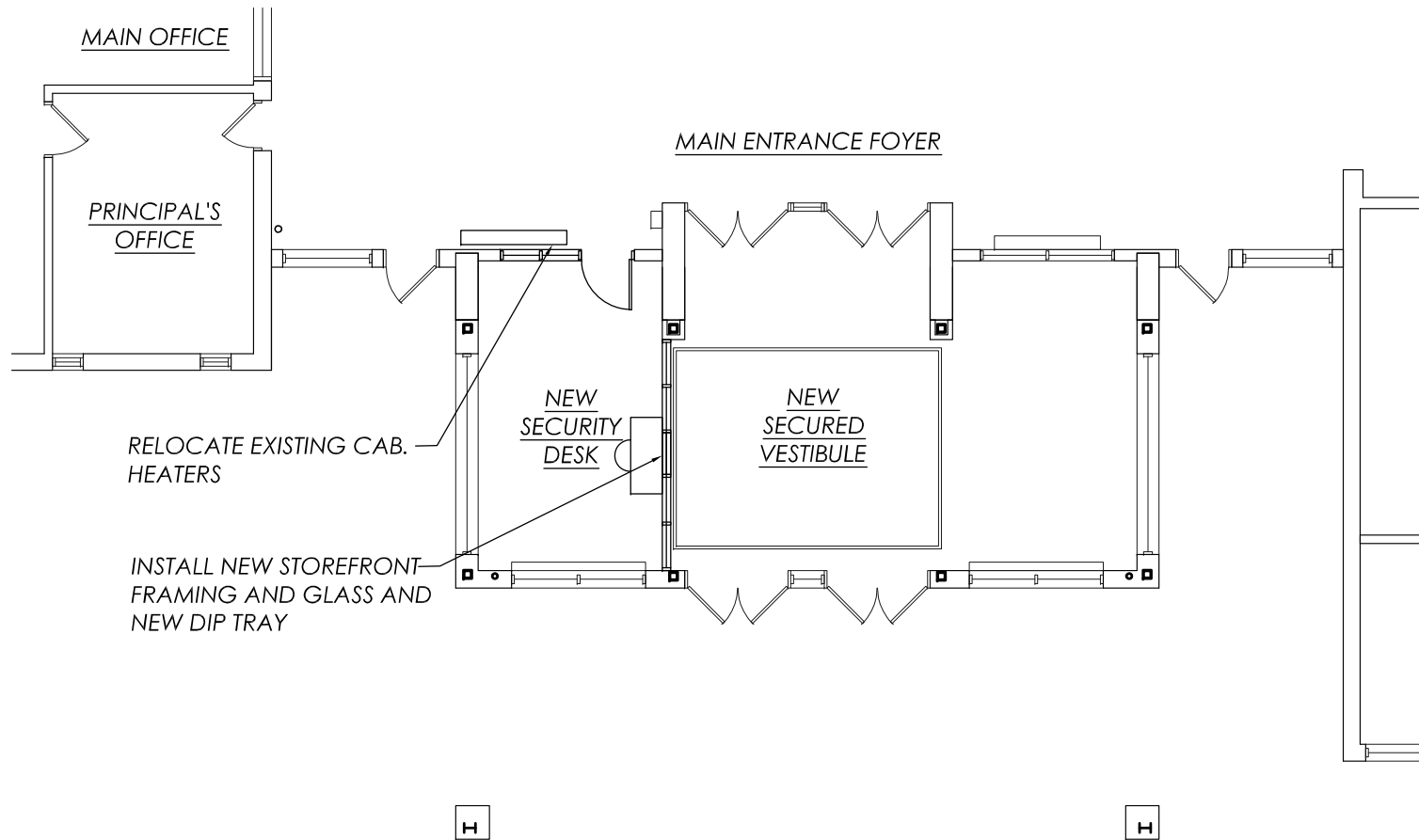
- Building front entrance reconfiguration for enhanced security; we have asked our architect to cost out and draw a possible reconfiguration at each school.
- The total estimated cost for all 6 is approx. \$2MM
- Normally NYS aide will not help with this type of item however new legislation will allow a reasonable size reconfiguration or addition to be aided; our draft will meet that standard

CLARENCE HIGH SCHOOL
Clarence High School



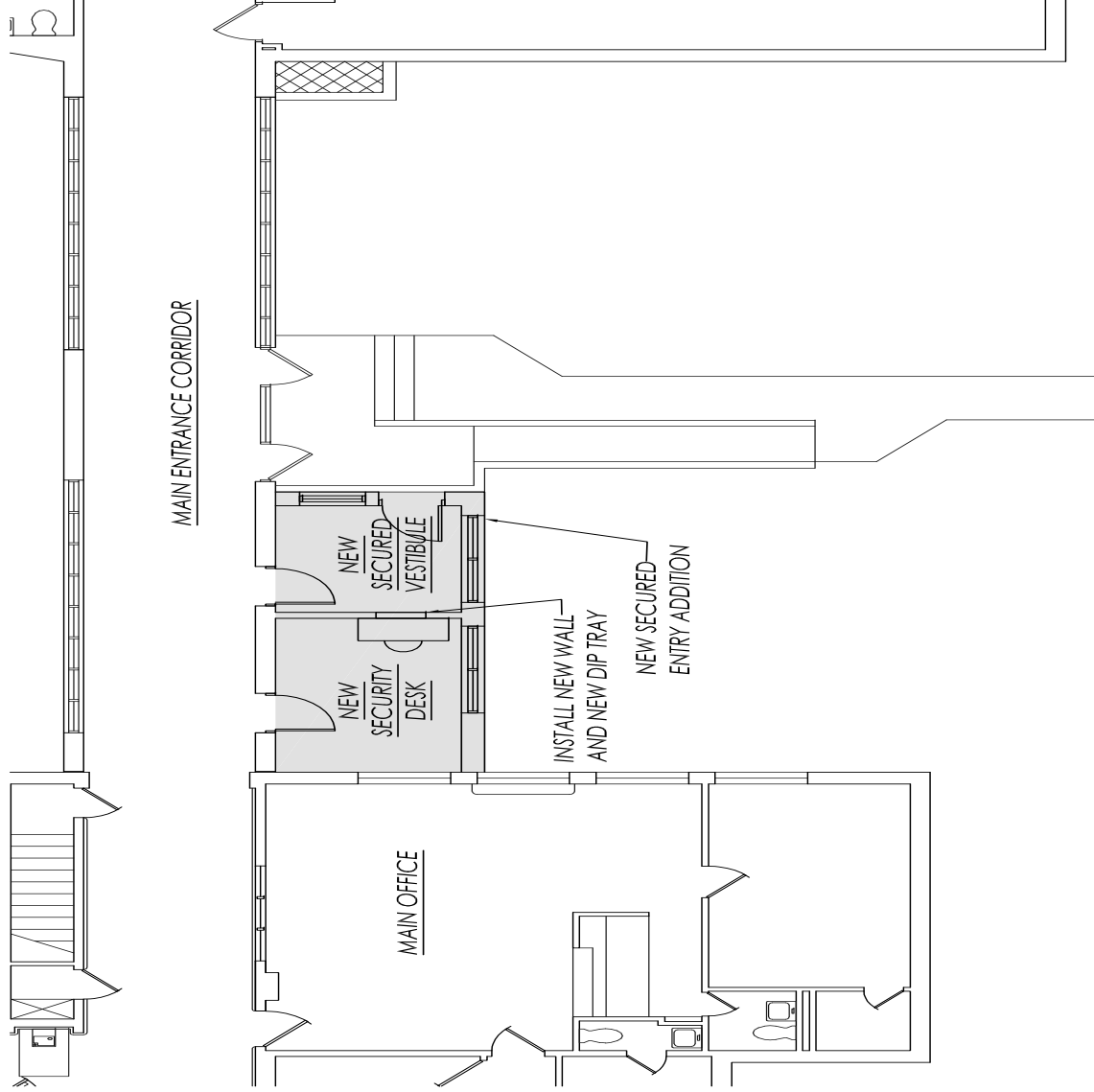
PARTIAL FIRST FLOOR PLAN

CLARENCE MIDDLE SCHOOL

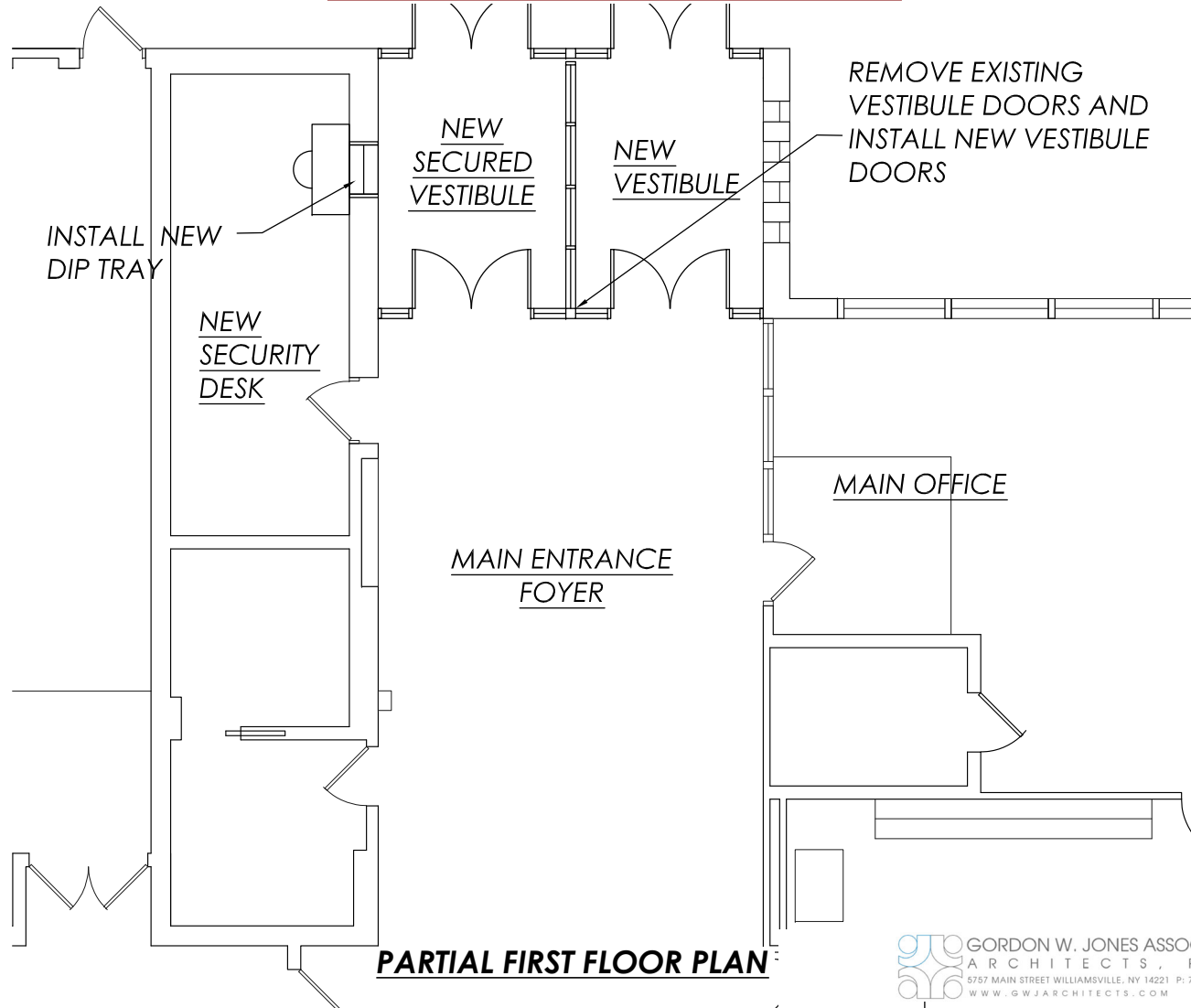


PARTIAL FIRST FLOOR PLAN

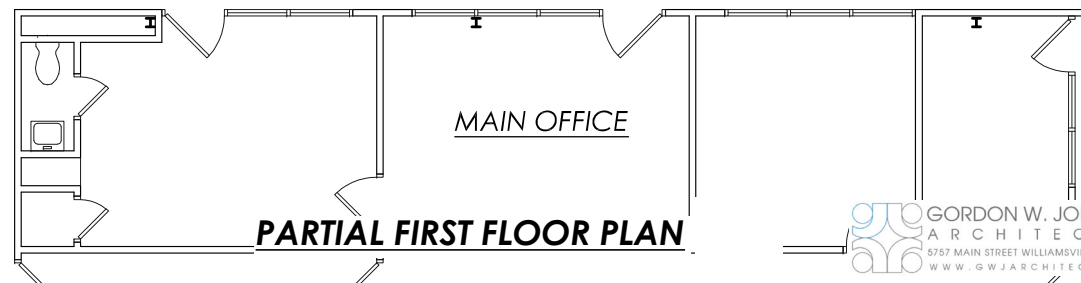
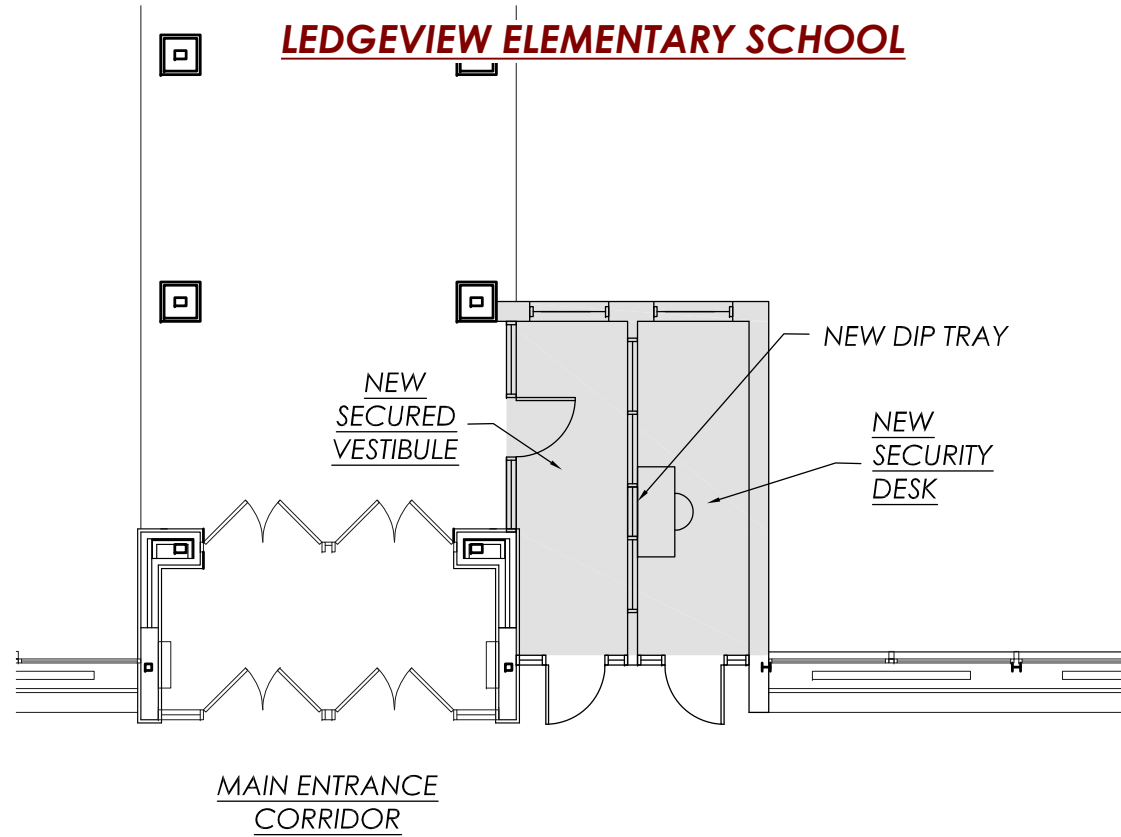
CLARENCE CENTER ELEMENTARY SCHOOL



HARRIS HILL ELEMENTARY SCHOOL

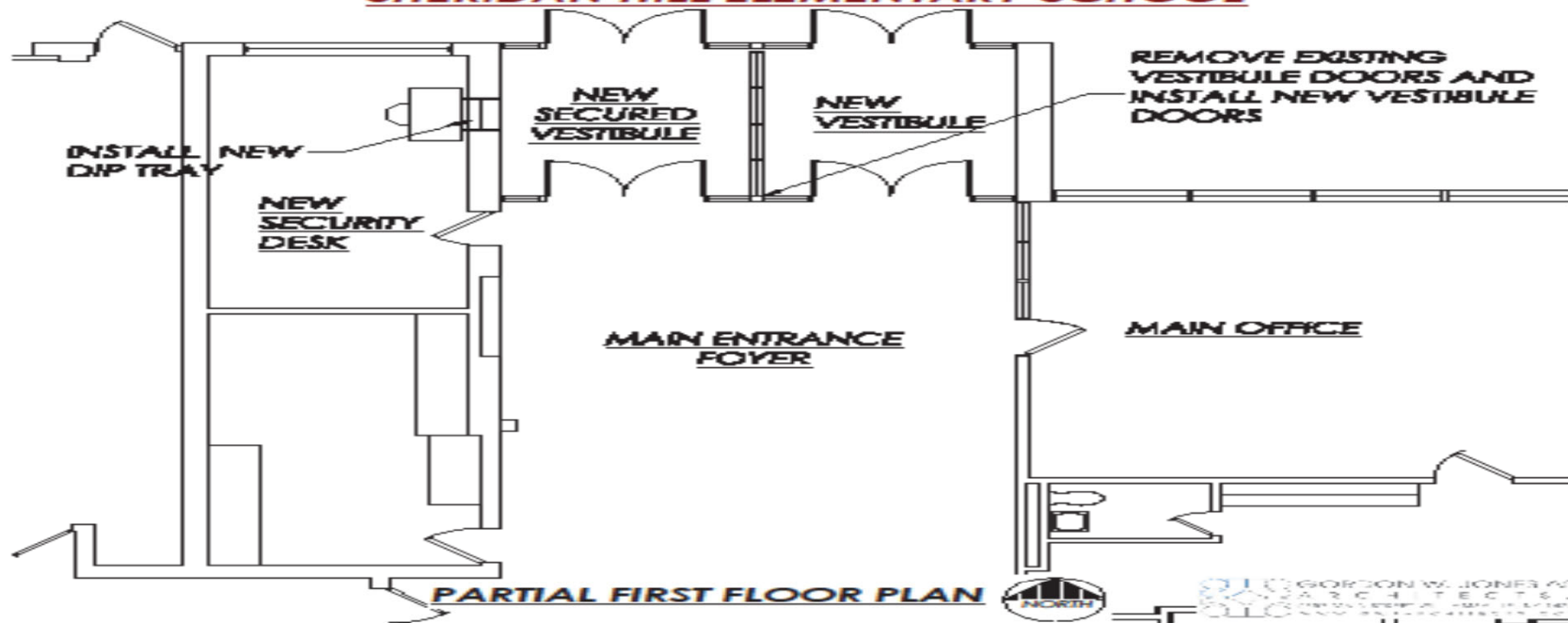


LEDGEVIEW ELEMENTARY SCHOOL



PARTIAL FIRST FLOOR PLAN

SHERIDAN HILL ELEMENTARY SCHOOL



Additional Items to Consider

- Should an addition for the FSC be added; it will not be aided and will cost approx.\$400K
- Upgrades to Middle School tech area; mainly a dust collector unit \$125K
- District Office front door structure \$90K
- Reconfigure front driveway area at HS to relieve congestion (estimate but not priced out \$800K)
- Additional Safety Measures; Window film (district wide \$800K), other items
- Anything else ??

Schedule of Facilities Committee Meetings

- Wednesday, February 13, 2019
- Wednesday, March 13, 2019
- Thursday, April 18, 2019
- **Final recommendations presented to the Board of Education at their meeting on May 6, 2019**